



TM

Zep Solar



Less Rack, More Solar.

Zep Solar was founded on the principal that good engineering can make the world a better place.

Our founders have been at the forefront of the solar industry for over two decades; we understand what it takes to move our industry forward. Our team of PV experts is complimented by a core group of visionary product design engineers and business executives who understand what it takes to create a company that will endure. We are committed to bringing you technology solutions that will help your business grow and make the job of deploying solar power easier than ever before.

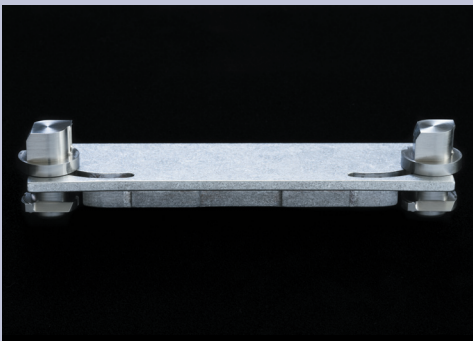
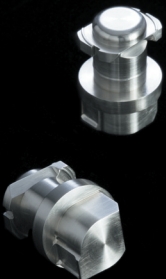


The Zep System offers a whole new way to do solar—*fast*.

With a simple variant of the conventional PV module frame and our innovative coupling hardware, the patented Zep System can cut total installation time in half! The inefficient methods of conventional rail-based mounting systems are now becoming a thing of the past. In their place, we offer mounting methods that greatly reduce material waste, greatly increase the speed of installation, and greatly enhance the safety of PV systems.

Zep System Features Include:

- » Rock-solid rail-free structure
- » 85% lower parts count
- » Rapid drop-in mounting action
- » Auto grounding of entire array
- » Hyper-bonded matrix for safer grounding
- » Drill-driven array leveling action
- » Theft resistant hardware

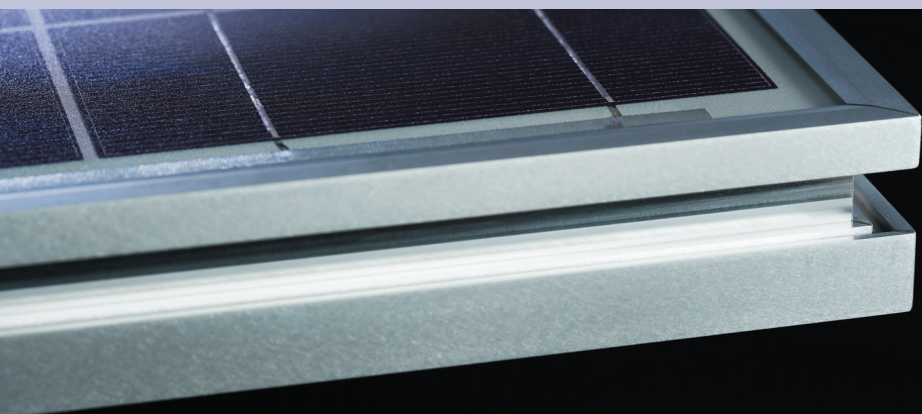




Add Value and Differentiate Your Products with Zep Compatibility

For Manufacturers: Zep Compatible is a standard that enables the rapid coupling of PV modules to each other and to various other PV balance-of-system components. PV modules can be manufactured with Zep Compatible frames at no extra cost and BOS components can find a home on the Zep Groove with simple modifications to existing designs.

If your company is interested in learning more about Zep Compatible, please contact us for further information.



Zep Solar, Inc.

Phone: (415) 479-6900 • Fax: (415) 479-6901

www.zepsolar.com