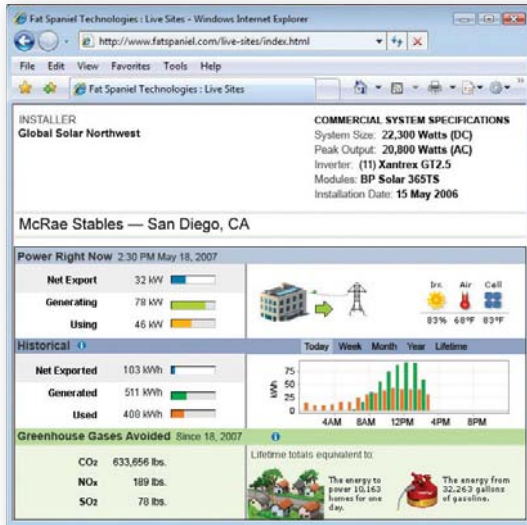




# Commercial Solar Electric Systems Monitoring and Reporting Services Data Sheet

For commercial solar electric systems with revenue grade monitoring and reporting, we provide four types of core service packages: CSI Basic, Standard, Advanced and Premium.

For 3-phase systems rated at 20 kW DC and above.



Customer's Web view is accessible from the Fat Spaniel global portal page at <http://monitor.fatspaniel.com>. View shown is typical of Advanced Monitoring or Premium Monitoring systems.

Full Weather Station	CSI Basic	Standard	Advanced	Premium
Basic Weather Station	CSI Basic	Standard	Advanced	Premium
Building Load	CSI Basic	Standard	Advanced	Premium
Detail Web View	CSI Basic	Standard	Advanced	Premium
Simple Web View	CSI Basic	Standard	Advanced	Premium
Alerts	CSI Basic	Standard	Advanced	Premium
Revenue-Grade Metering	CSI Basic	Standard	Advanced	Premium
DataCenter Hosted Services	CSI Basic	Standard	Advanced	Premium
On-premises Monitoring System	CSI Basic	Standard	Advanced	Premium

Chart showing Fat Spaniel's core packages with their service features.

## Basic Commercial PBI-Compliant Monitoring

**208V, 3-Phase**  
SKU # 1438

**480V, 3-Phase**  
SKU # 1439

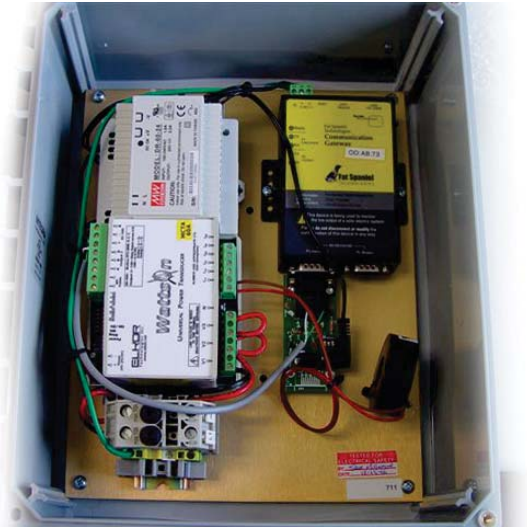
- Meets metering and monitoring requirements of California Solar Initiative (CSI) Performance-Based Incentive (PBI) and EPBB programs, and of all states requiring revenue grade metering
- Includes ANSI standard revenue grade meter (+/- 0.5%)
- Simple Web-based views
- Alerts include inverter off and communications failure – 24-hour notification
- Use with 3-phase inverters, either 208V measured at 208V or 480V measured at 480V
- Outdoor-rated enclosure (NEMA 3, 3R, 3S, 4, 4X)
- Includes communications gateway
- Licensed for systems rated at 20 kW DC – requires license upgrade 7100-xx for larger systems
- Not upgradable to Weather Station or Building Demand options
- **Includes 5 years of monitoring service and PUC reporting service**

## Standard Commercial PBI-Compliant Monitoring

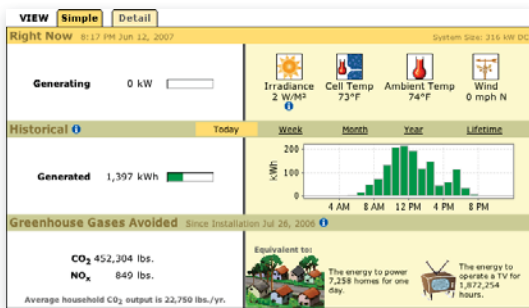
**208V, 3-Phase**  
SKU # 1538

**480V, 3-Phase**  
SKU # 1539

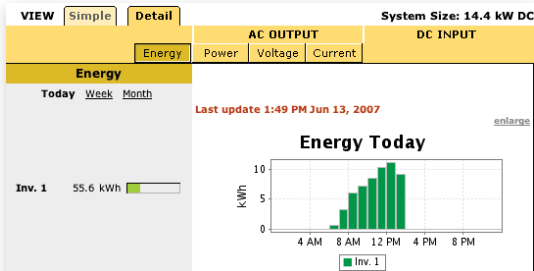
- Meets metering and monitoring requirements of California Solar Initiative (CSI) Performance-Based Incentive (PBI) and EPBB programs, and of all states requiring revenue grade metering
- Includes ANSI standard revenue grade meter (+/- 0.5%)
- Detail and Simple Web-based views
- Alerts include inverter off and communications failure – 24-hour notification
- 5-minute sampling interval for monitoring
- Use with 3-phase inverters, either 208V measured at 208V or 480V measured at 480V
- Outdoor-rated enclosure (NEMA 3, 3R, 3S, 4, 4X)
- Includes communications gateway
- Licensed for systems rated at 20 kW DC – requires license upgrade 7100-xx for larger systems
- Can be upgraded to Weather Station or Building Demand options
- Advanced Hardware Replacement service in US and Canada
- **Includes 1 year of monitoring and PUC reporting service**



View of enclosure (without its cover) and components including communications gateway and revenue-grade meter.



Simple Web view showing current and historical power generated along with greenhouse gases avoided. On the top right is the optional Full Weather Station data: irradiance, cell temperature, ambient temperature, wind speed and wind direction.



Detail Web view of Independent Revenue-Grade Monitoring showing today's energy generated from inverter. To the right is a chart showing the system's energy production.

### Advanced Commercial PBI-Compliant Monitoring

**208V, 3-Phase**  
SKU # 6438

**480V, 3-Phase**  
SKU # 6439

- Meters for 4-wire Building Demand and 3-wire/4-wire 3-phase Revenue Grade Metering
- Includes two ANSI standard revenue grade meters (+/- 0.5%)
- Basic Weather Station for module temperature, air temperature and irradiance monitoring
- Meets metering and monitoring requirements of California Solar Initiative (CSI) Performance-Based Incentive (PBI) and EPBB programs, and of all states requiring revenue grade metering
- Detail and Simple Web-based views
- Alerts include inverter off and communications failure – 24-hour notification
- 5-minute sampling interval for monitoring
- Use with 3-phase inverters, either 208V measured at 208V or 480V measured at 480V
- Outdoor-rated enclosure (NEMA 3, 3R, 3S, 4, 4X)
- Includes communications gateway
- Licensed for systems rated at 20 kW DC – requires license upgrade 7100-xx for larger systems
- Advanced Hardware Replacement service in US and Canada
- **Includes 1 year of monitoring and PUC reporting service**

### Premium Commercial PBI-Compliant Monitoring

**208V, 3-Phase**  
SKU # 6438FW

**480V, 3-Phase**  
SKU # 6439FW

- Meters for 4-wire Building Demand and 3-wire/4-wire Revenue Grade Metering
- Includes two ANSI standard revenue grade meters (+/- 0.5%)
- Full Weather Station for module temperature, air temperature, irradiance, wind speed and wind direction monitoring
- Meets metering and monitoring requirements of California Solar Initiative (CSI) Performance-Based Incentive (PBI) and EPBB programs, and of all states requiring revenue grade metering
- Detail and Simple Web-based views
- Alerts include inverter off and communications failure – 24-hour notification
- 5-minute sampling interval for monitoring
- Use with 3-phase inverters, either 208V measured at 208V or 480V measured at 480V
- Outdoor-rated enclosure (NEMA 3, 3R, 3S, 4, 4X)
- Includes communications gateway
- Includes cellular modem hardware (does not include cellular modem service)
- Licensed for systems rated at 20 kW DC – requires license upgrade 7100-xx for larger systems
- Advanced Hardware Replacement service in US and Canada
- **Includes 1 year of monitoring and PUC reporting service**

### Commercial Monitoring License and Service Options

SKU# 7100-xxxx

- Licence for maximum kW capacity rating level – one-time cost based on maximum kW system capacity rating supported

SKU# 7101-xxxx

- Five additional years of Fat Spaniel services for Basic, Standard, Advanced and Premium monitoring

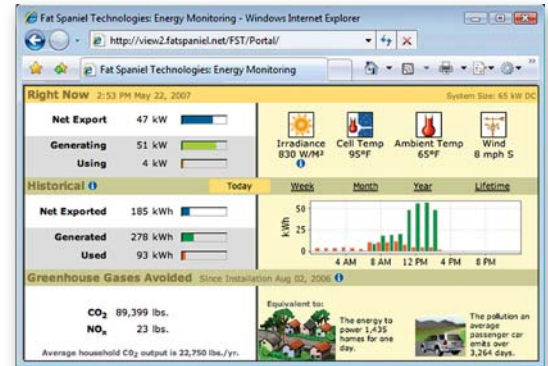
SKU# 7105-xxxx

- One additional year of Fat Spaniel services for Basic, Standard, Advanced and Premium monitoring

**Note:**

xx to xxxx is the maximum kW Capacity; the capacities are 20, 30, 50, 75, 100, 250, 500 and 1000kW. Example: 7100-250 = 7100-250kW system

Commercial Monitoring Options	
SKU# 2160 SKU# 3160	<p><b>Xantrex Inverter-Direct Fault Monitoring (for Xantrex PV Series inverters only)</b>  <b>For all core packages: SKU # 14xx, 15xx, 64xx, 64xxFW</b></p> <ul style="list-style-type: none"> <li>• For use with ONE Xantrex inverter using direct monitoring (for obtaining inverter generated status and fault codes)</li> <li>• Includes outdoor-rated enclosure (NEMA 3, 3R, 3S, 4, 4X) and conduit-ready power</li> <li>• Includes communications gateway</li> </ul>
SKU# 9041 (For US and Canada: GPRS-based)  SKU# 9046 (For outside North America: GSM-based)	<p><b>Cellular Modem add-on (cellular service NOT included)</b>  <b>For core packages with SKU # 14xx, 15xx and 64xx (NOT 64xxFW)</b></p> <ul style="list-style-type: none"> <li>• Provides Internet access for Fat Spaniel gateway</li> <li>• Requires purchase of cellular service from a communications service provider (not Fat Spaniel)</li> <li>• Requires customer-provided SIM chip</li> <li>• This is an alternative to the typical deployment which would use a local network connection via Cat-5 cable to the Internet access device (the router)</li> </ul>
SKU# 8205	<p><b>Basic Weather Station with temperature and sunlight monitoring:</b>  <b>For core packages with SKU # 1538 or 1539</b></p> <ul style="list-style-type: none"> <li>• Irradiance (pyranometer)</li> <li>• Module temperature</li> <li>• Ambient air temperature</li> <li>• Includes outdoor-rated enclosure</li> </ul>
SKU# 8295	<p><b>Full Weather Station with temperature and sunlight monitoring:</b>  <b>For core packages with SKU # 1538 or 1539</b></p> <ul style="list-style-type: none"> <li>• Irradiance (pyranometer)</li> <li>• Module temperature</li> <li>• Ambient air temperature</li> <li>• Wind speed</li> <li>• Wind direction</li> <li>• Includes outdoor-rated enclosure</li> </ul>
SKU# 0710	<p><b>Flash View – Standard</b></p> <ul style="list-style-type: none"> <li>• Provides Flash-based implementation of Simple View live data</li> <li>• Includes "How it Works" module explaining operation of a solar electric system</li> <li>• Can be viewed from either lobby kiosk display or online with a Web browser</li> </ul>
SKU# 0711	<p><b>Flash View – Custom</b></p> <ul style="list-style-type: none"> <li>• Builds on the Standard Flash View to add custom graphical display elements for marketing or educational purposes. Charged on a professional services basis.</li> </ul>
SKU# 0737	<p><b>Data Feed – Non-billing</b></p> <ul style="list-style-type: none"> <li>• Per year, per site pricing</li> <li>• Used for non-billing purposes such as graphing</li> <li>• Data: average power (kW), incremental energy (kWh) and incremental irradiance (Wh) in 15-minute increments</li> <li>• Retrievable on an hourly basis</li> <li>• CSV and / or XML format</li> </ul>



Simple Web view showing real-time and historical net energy export, production and usage. Data also shows greenhouse gases avoided. A Full Weather Station monitors irradiance, module (cell) and ambient temperature as well as wind speed and wind direction.

## Commercial Monitoring System Specifications

### Gateway

- Operating Temperature: 10 to 60°C (14 to 140°F)
- Relative Humidity: 5 to 95%
- Storage Temperature: -20 to 85°C (-4 to 185°F)
- Power Consumption: 340mA @12Vdc

### System Enclosure

- Dimensions  
6 x 6 x 4 (xx51W)  
12 x 10 x 4 (xx51, xx51W, 1235)  
12 x 10 x 6 (1272-xx, 1235, 9041)
- Material: Polycarbonate
- Rating: NEMA 3, 3R, 3S, 4, 4X

### Enclosure Assembly (with Fat Spaniel Gateway and Independent meter)

- Certifications: TÜV, IEC 61010-1, FCC Part 15 Class B, meets ANSI C12

### Inverter-Direct

- Xantrex Accuracy: +/- 5%

### Inverter-Indirect Meter (Elkor)

- AC Voltage Error: +/- 0.5%
- AC Current Accuracy: +/- 0.5%
- Power Accuracy: +/- 0.5%
- Power Consumption: 100mA max
- Certifications: meets ANSI C12

### Weather Station

- Irradiance  
Type: Silicon Pyranometer  
Directional Accuracy: +/- 5%  
Sensitivity change per year: < 2%
- Ambient Temperature  
Type: K-type thermistor  
Accuracy: +/- 2° C
- Module Temperature  
Type: K-type thermistor  
Accuracy: +/- 2° C
- Wind speed  
Type: Direction & Speed Anemometer  
Range: 3 - 175 mph  
Accuracy: +/- 5%
- Wind direction  
Accuracy: +/- 7°

### Cellular Wireless Modem

- Operating Temperature: -30° to 70°C (-22° to 158°F)
- Modem Type: GSM / GPRS Class 10
- SIM Connector: Standard 3V SIM receptacle



Display kiosk presents graphical, Flash-based views for educational or marketing purposes. Typically used in a lobby. Enables clear yet compelling presentation of information from the clean energy system. Standard Flash view shows live data from the solar electric system as well as a "how it works" page.

Sold by:

Supplied by:



groSolar.com  
800.467.6527  
OR CCB Lic #180494

SKU# 0738	Data Feed – Billing <ul style="list-style-type: none"> <li>• Per year, per site pricing</li> <li>• Used for billing purposes</li> <li>• Data: average power (kW), incremental energy (kWh), last energy (kWh), incremental irradiance (Wh) and last irradiance (Wh) in 15-minute increments</li> <li>• Retrievable on a 30-minute basis</li> <li>• CSV and / or XML format</li> </ul>
SKU# 7014	Data Feeds and Reports – Custom
SKU# 0712	Commercial System Installer Portal <ul style="list-style-type: none"> <li>• Web-based aggregated view of data from all of an installer's end-user systems</li> <li>• Access to views for each individual installed system</li> <li>• Access to system status info and to data download</li> </ul>
SKU# 7501	Display Kiosk: Basic Floor Model with 17" display (FST-17FL2) For Standard or Custom Flash View <ul style="list-style-type: none"> <li>• KIS. Aluminum with NO keyboard, NO trackball, No touchscreen. Resolution 1280x1024</li> </ul>
SKU# 7502	Display Kiosk: Basic Floor Model with 17" display (FST-17FL3) For Standard or Custom Flash View <ul style="list-style-type: none"> <li>• KIS. Aluminum with keyboard and trackball, No touchscreen. Resolution 1280x1024</li> </ul>
SKU# 7503	Display Kiosk: Basic Floor Model with 17" display (FST-17FL4) For Standard or Custom Flash View <ul style="list-style-type: none"> <li>• KIS. Aluminum with touchscreen, NO keyboard, No trackball. Resolution 1280x1024</li> </ul>
SKU# 7615	Display Kiosk: Basic Floor Model with 15" display For Standard or Custom Flash View <ul style="list-style-type: none"> <li>• Monegonet. Aluminum with reduced set keyboard and trackball.</li> </ul>
SKU# 7617	Display Kiosk: Basic Floor Model with 17" display For Standard or Custom Flash View <ul style="list-style-type: none"> <li>• Monegonet. Aluminum with reduced set keyboard and trackball.</li> </ul>
SKU# 7619	Display Kiosk: Basic Floor Model with 19" display For Standard or Custom Flash View <ul style="list-style-type: none"> <li>• Monegonet. Aluminum with reduced set keyboard and trackball.</li> </ul>

Fat Spaniel Technologies, Inc.

2 W. Santa Clara Street 5th Floor San Jose, CA 95113-1824 Tel: 408.279.5262 Fax: 408.516.9111 www.fatspaniel.com sales@fatspaniel.com

Copyright © 2007 Fat Spaniel Technologies, Inc. All rights reserved.

Fat Spaniel Technologies and the Fat Spaniel Technologies logo are trademarks, and Visualize Renewable Energy is a slogan mark of Fat Spaniel Technologies, Inc. v 1.5, Information subject to change without notice.