

## [String and Microinverters]

### GROSOLAR AND MOTECH INDUSTRIES ANNOUNCE

**PARTNERSHIP.** An exclusive distribution agreement was announced between groSolar and Motech Industries. groSolar, a solar solutions provider with a broad distribution network, will have exclusive rights to distribute the Motech PVMate inverters in North America. The PVMate inverters are CEC listed with weighted efficiencies of 95.5%–96%. The single-phase, grid-direct inverters interconnect at 208 or 240 Vac and range in capacity between 2,700 and 5,300 watts. Motech, the world's sixth largest provider of solar cells, started manufacturing grid-tied solar inverters in 2006. Partnering with groSolar allows the Taiwanese company to leverage an established international sales channel. On the decision to partner with Motech, Jeff Wolfe, groSolar co-founder and CEO, said, "Motech has successfully developed a series of PV inverters that perform at high efficiency, enable greater flexibility for system designers and allow easier installation and service for system installers."

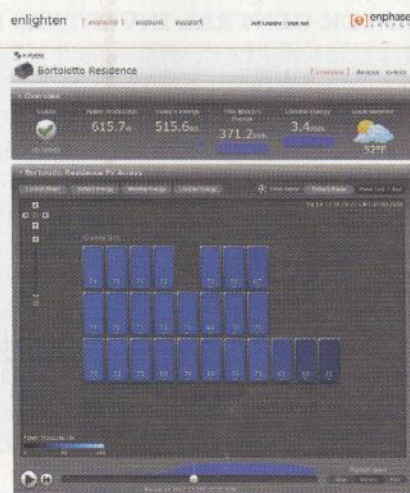
» groSolar / 800.374.4494 / [grosolar.com](http://grosolar.com)



### ENPHASE BACKS PRODUCT WITH 15-YEAR WARRANTY.

Enphase Energy will provide an industry-leading 15-year standard warranty on its complete line of microinverters. Included in the Enphase Entrust warranty is a 100% uptime energy production guarantee. Any energy lost due to the malfunction of an Enphase product will be reimbursed at a rate of \$0.20/kWh for a period of up to one month. Thanks to the Enphase Enlighten Web-based monitoring tool, contractors will be alerted to component failures immediately. The Enlighten Web site provides a graphical representation of every module's performance, instantaneously and over time. In addition to visualization, the site offers analytical tools that can distinguish, for example, between daily or seasonal power loss due to shading or a sudden malfunction. Any unexpected shortfall in energy production triggers an alert. Contractors can then schedule a maintenance trip at their convenience, knowing that the customer will be reimbursed for the lost energy.

» Enphase Energy / 877.797.4743 / [enphaseenergy.com](http://enphaseenergy.com)



### FRONIUS IG PLUS INVERTERS LISTED WITH CEC.

Fronius USA officially released its IG Plus grid-connected inverter line for the North American market. Originally launched in Europe as a 4 kW, single-stage inverter in November 2007, larger capacity 2- and 3-stage units were released the following year. These 8 kW and 12 kW IG Plus inverters account for the bulk of the more than 75 MW of installed IG Plus capacity in Europe. The North American IG Plus inverter line consists of nine CEC listed models, ranging from 3 kW to 12 kW. The single-phase inverters in this product line can interconnect at 208, 240 or 277 Vac. Taking advantage of the inverter's 3-stage design, two 3-phase inverters round out the IG Plus product line. All multistage IG Plus inverters match the number of active power stages to instantaneous output power requirements and also rotate the master power stage. This practice optimizes performance and balances the hours of operation across each stage.

» Fronius USA / 810.220.4414 / [fronius-usa.com](http://fronius-usa.com)



[Racking]

**CONERGY SHOWCASES SOLARGIANT GROUND MOUNT.**

Conergy designed its SolarGiant NA ground mounted array structure specifically for the commercial through utility scale North American PV market. That means it is designed to withstand wind loads up to 120 mph and snow loads of 20 psf, while still being cost effective. The SolarGiant NA is constructed using aluminum rails and stainless steel assembly parts, which provides maximum durability and longevity. The product warranty is 10 years. The key to SolarGiant's cost effectiveness is that module installation and grounding are quick and convenient. Slide-in rails allow modules to be slid into place. Module grounding is achieved using specially designed WEEB clips that were developed in conjunction with Wiley Electronics. Proprietary Electriwedge hardware locks the modules into place. The fixed-tilt SolarGiant racking system can be field set for 15°-30°. The foundation may consist of a conventional pier detail or a surface mounted concrete footer.

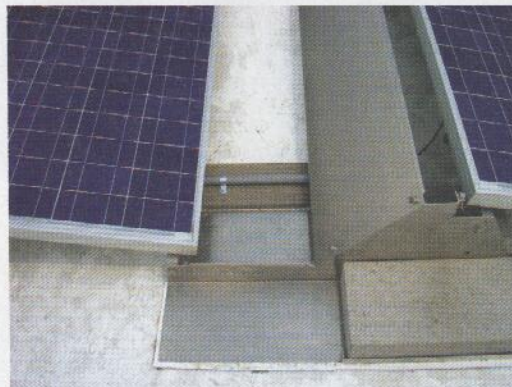
» Conergy USA / 888.396.6611 / conergy.us



**PANELCLAW FLAT ROOF RACKING AVAILABLE FROM GROSOLAR.**

PanelClaw has released its first commercial flat roof mounting system, the Polar Bear. Independently tested at Colorado State's Wind Engineering and Fluids Laboratory, the Polar Bear is ballasted and non-rail based. A mechanical roof attachment option is available. Boasting an extremely low parts count, the PanelClaw system consists of just three components—support, claw and deflector—and two fasteners. A tilt-up design simplifies installation and roof maintenance. Electrical grounding hardware for the racking is factory installed. The base of each support comes with a preinstalled slip sheet that is compatible with EPDM, TPM, PVC, and tar and gravel roofs. An installed system weight of 3-7 psf is typical. The final tilt angle of the array is 10°-15°, depending upon the width of the module. An easy-to-use array configuration tool is available for designers. US made with a 10-year warranty, PanelClaw is available exclusively from groSolar.

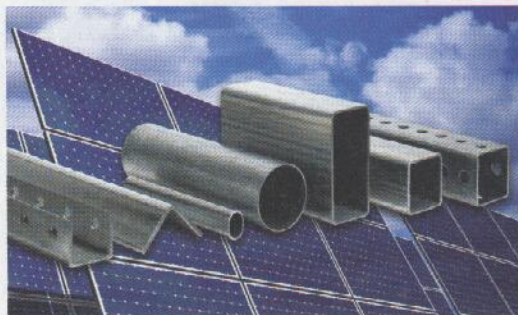
» PanelClaw / 978.965.2150 / panelclaw.com



**ALLIED INCREASES FOCUS ON SOLAR MARKET.**

Allied Tube & Conduit has identified solar as the number one growth market of the 70 markets the company serves. Headquartered in Harvey, IL, Allied Tube & Conduit is the largest business unit of the well-known Tyco Electrical and Metal Products division of Tyco International. The division headquarters is also the largest production facility for products that include Flo-Coat and Gatorshield galvanized steel tubing. Additional business units include Allied Electrical Conduit, Unistrut Strut Channel, Allied Standard Pipe and AFC Cable Systems. Service offerings include Unistrut Construction Specialty Contracting and Unistrut Fall Protection Systems and Certification. Steel is becoming an increasingly popular material for custom built mounting structures for commercial and industrial scale PV array fields. Allied's product range of in-line galvanized steel products includes round, square and rectangular tubing, and angle and roll form channels in a variety of galvanized finishes for advanced corrosion protection.

» Allied Tube & Conduit / 800.882.5543 / alliedtube.com



SO  
 Design, In  
 Nov 2008 (Issue 1.1)  
 Version 070810  
 solar contractors for  
 utility services. Who  
 electrical installation, ca  
 and operation  
 electric systems are  
 of the same size  
 to the utility and  
 connected to the utility  
 smart. Large comm  
 projects. Before sta  
 ments.  
 from 1 (panel) to rep  
 residential systems