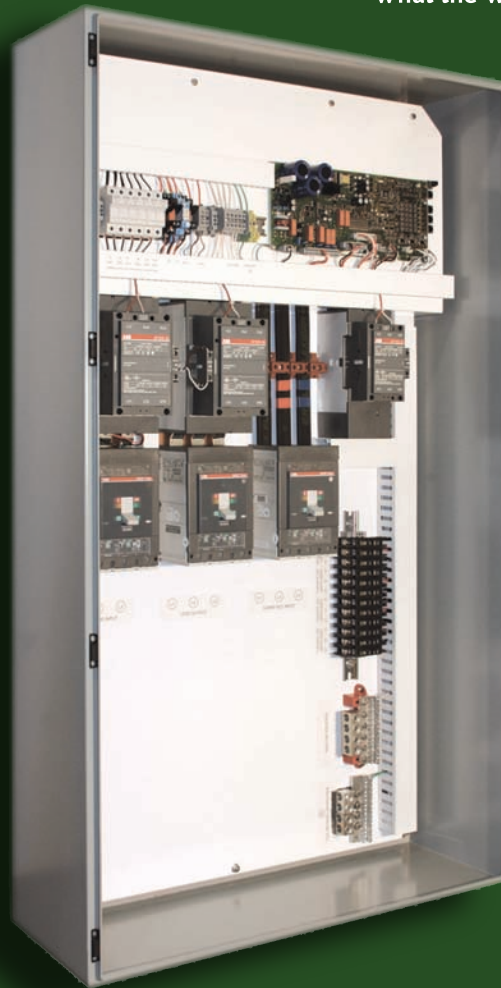


Multicenter System for SUNNY ISLAND 5048U

- For commercial off- grid systems
 - 100 kW @ 120/208 Vac, 60 Hz
- Parallel up to 4 Sunny Island clusters
 - 60 kW continuous from batteries
 - Up to 1200 Amp battery charging
- Includes 300 A internal AC distribution bus
- Integral overcurrent protection
 - (1) 300A Load breaker (108 kW)
 - (1) 300A Generator breaker (108 kW)
 - (1) 300A PV inverter breaker (108 kW)
 - (12) 70A breakers for Sunny Island
- Uses external PV distribution panel
 - One home run from PV array
 - PV breakers can be sized to match inverters
- Generator isolation relay with reverse current protection
- Load shed relay on low battery condition
- Fault tolerant generator to load bypass function.
- NEMA 12 Enclosure standard, NEMA 4 or 4X optional
- ETL Listed

groSolar®

What the World Needs. NOW



MCB-12U Multi-Cluster Box for SUNNY ISLAND 5048U

Easy design of large off-grid hybrid systems

Design and Install large, Code Compliant, off-grid systems with minimal effort: The new Multi-cluster Box for the Sunny Island 5048U is the ideal solution for the easy installation off grid hybrid systems up to 110 kW of load. Connect up to four parallel three-phase clusters, each consisting of three Sunny Island battery inverters, for up to 60 kW of battery inverter capacity

Installation is simple: The Multi-Cluster Box is pre-wired with 300 A main disconnect breakers for connection to Generator, Loads, Sunny Boy / Windy Boy inverters plus individual 70 A input breakers for up to 12 Sunny Island battery inverters. The communication cables necessary for installation are also included. ETL 508A Listed and fully Code compliant for off-grid use.

Technical Data

General

Number of Phases	3-phase
Nominal Voltage	3 x120 V/208
Voltage Range	105 - 132 V / 181 - 229 V
Nominal Frequency (range)	60 Hz (55 - 65 Hz)
Dimensions(W/H/D)	122/165/36 cm
Mounting Type	Wall Mounted
Weight	Approximately 485 lbs (220 kg)
Battery Charge Capacity	1200Amps (300A per cluster x 4)

Connections for Sunny Island

Number	12 x 70
Continuous AC Output at 77°F	60kW
Continuous Output for 30 min./1 min.	80kW/100kW
Nominal AC Current at 77°F	3 x 167A

Connections for PV System

Number	1 x 3-phase
Nominal AC Power/AC Current	110kW/3 x 300A

Load Connection

Number	1 x 3-phase
Nominal Power / Current	110kW/3 x 300A

Generator Connection

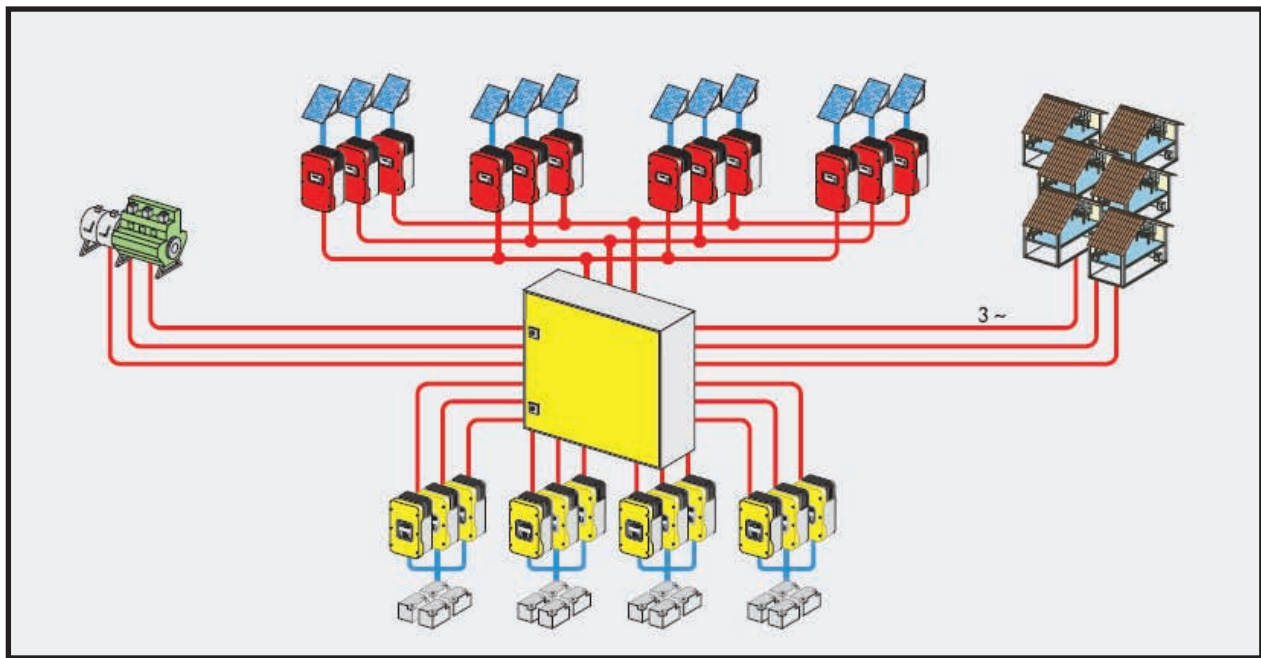
Number	1 x 3-phase
Nominal Power / Current	110kW/3 x 300A

Ambient Connection

Ambient Temperature	-13°F to 104°F (-25°C to 50°C)
Enclosure Rating	NEMA 12 Standard, NEMA 4/4X optional
Certifications and Permits	UL 508

Accessories

Communication Cable	4 x 25' (4 x 8m) Shielded Cat 5e Std, longer lengths optional
Type Designation	Optional
SMA MC Communication Piggy Back cards requires (1/cluster)	
SMA Web Box (optional) Allows remote monitoring and control of system via internet. (Requires internet connection onsite.)	



800.374.4494
groSolar.com

*Manufactured by groSolar in cooperation with SMA

groSolar®

What the World Needs. NOW