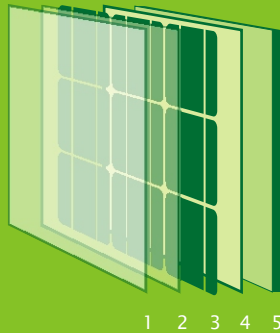




ASTROenergy

A CHINT COMPANY

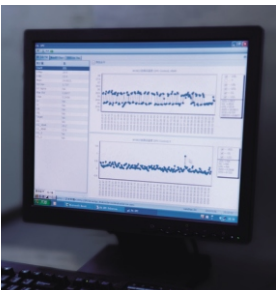
CHSM 6610P



- 1 Glass
- 2 EVA
- 3 Cell Array
- 4 EVA
- 5 Backsheet

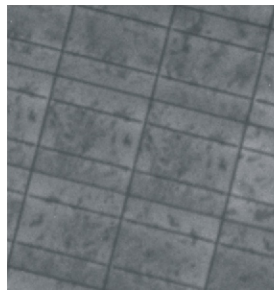
AVAILABLE WATTAGES	210	215	220	225	230
---------------------------	-----	-----	-----	-----	-----

Precision Solar Cell Manufacturing



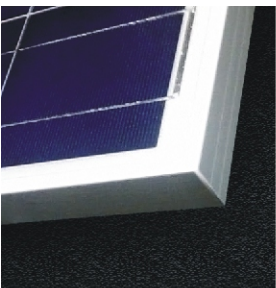
- First PV company in Mainland China to use Manufacturing Execution System (MES) in solar cell production. The products, processes, and equipments are strictly controlled using SPC tools for the highest quality and performance.

State-of-the-Art Solar Module Manufacturing



- Within the same power range and efficiency, cells are further sorted by the short circuit current in order to minimize losses caused by electric-mismatch.
- IV and EL tests are performed before the lamination to ensure the consistency of encapsulated cells and process reliability.
- The EL test is repeated on each module before shipping to ensure product's quality and reliability.

Aesthetic Appeal



- Modules are assembled with high quality, smooth aluminum alloy frames.



CHSM 6610P		Electrical Characteristics				
<h3>Electrical Characteristics</h3>	Pmax(Wp)	210	215	220	225	230
	Isc(A)	7.80	7.96	8.12	8.27	8.43
	Voc(V)	36.53	36.65	36.77	36.88	37.00
	Imp(A)	7.09	7.23	7.38	7.55	7.69
	Vmp(V)	29.60	29.65	29.70	29.76	29.81
	Tolerance(Wp)	±3%				
	Max. System Voltage(V)	DC1000V for SC II and DC600V for USA NEC				
	NOCT	43.4°C				
	Power Temp. Coeff(/°C)	-0.46872 %				
	Current Temp. Coeff(/°C)	0.05200 %				
	Voltage Temp. Coeff(/°C)	-0.34410 %				
	Ambient Temp. (°C)	-40~85				
	Max. Mechanical Load(Kg/m ²)	240				
	Test Condition	Irradiance of 100 mW/cm ² , AM1.5 Spectrum, and a Cell Temperature of 25°C				

Dimension Characteristics			
Length	1652mm / 5.420 feet	Width	994mm / 3.261 feet
Height	45mm / 0.148 feet	Weight	20kg / 44.0lbs
Cell Type	156×156(mm) Polycrystalline Silicon		
Cell Matrix	6×10	Cell Number	60 pcs
Frame			

