




## ZS Span™

for rail-based applications

**ZS Span offers the fastest and least expensive way to install PV arrays that require rail-based mounting components.** It's designed to interoperate with a growing list of Zep Compatible PV modules that incorporate the patented Zep Groove frame specification. With a series of drop-in, rock-in, and quarter-turn connections, ZS Span installs without the use of separate grounding hardware and is universally adaptable to third-party roof attachment solutions such as tile-hooks, hanger bolts, and flashed standoffs.

### Zep Compatible™

ZS Span mounting hardware is designed for use with Zep Compatible™ PV modules from leading PV module Manufacturers.

Visit [zepsolar.com](http://zepsolar.com) for a current list of Zep Compatible™ PV modules.

### Key System Benefits

Dramatically reduces installation time

Reduces roof attachment points up to 25%

Eliminates separate grounding hardware

Rapid, top-accessible precision array leveling

Ultra-reliable hyper-bonded grounding matrix

Universally compatible with third-party roof attachment solutions

Enhanced aesthetics

### Key Technical Features

Low system weight

Easily enables additional support at array edges for high wind applications

Interlock ETL listed to UL 1703 as ground bond means

Ground Zep UL and ETL listed to UL 467 as grounding and bonding device

Interlock, Cam Foot (Grounding), Hybrid Interlock (Grounding), Spanner Bar, Bar Sleeve and Ground Zep listed to UL 2703 as PV bonding device

### Our Other Product Families

 **ZS Aero**  
for low-slope & flat roofs

 **ZS Comp™**  
for composition shingle roofs

 **ZS Seam™**  
for standing seam metal roofs

 **ZS Tile™**  
for tile roofs

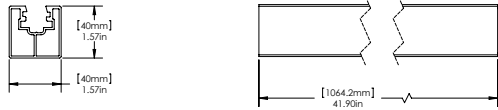
 **ZS Trap™**  
for trapezoidal metal roofs

 **ZS Wave™**  
for corrugated roofs



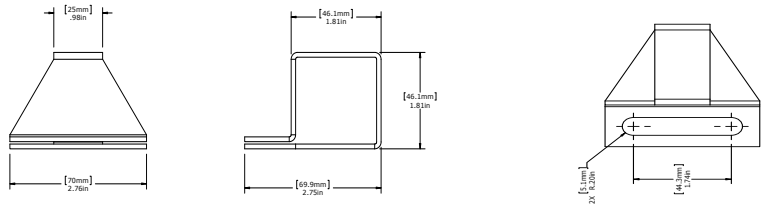
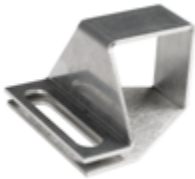
Components

Spanner Bar



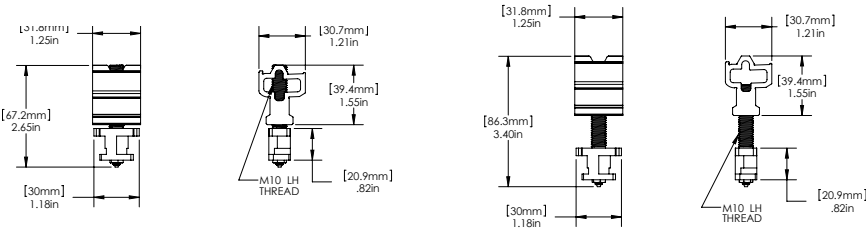
The Spanner Bar spans between and connects tile hooks or attachments and provides attachment point flexibility in both nominal east-west and north-south axes. It is available in 1 meter, 3 meter, and 4 meter lengths and can be spliced together for longer spans. UL listed to UL 2703

Spanner Clamp



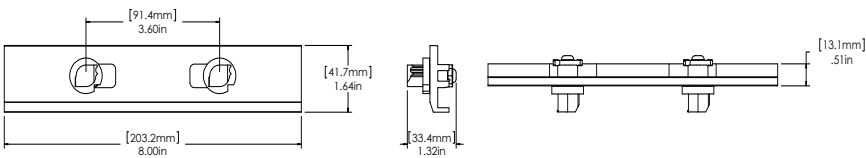
The Spanner Clamp provides a means of attachment between the Spanner Bar and the roof attachment hardware.

Cam Foot



The Cam Foot creates a structural connection between the Spanner Bars and the module frame and allows for precision height adjustability. The Hybrid Interlock functions as both Interlock and Cam Foot for areas where the structural attachment falls at an Interlock location. Cam Foot (Grounding) UL listed to UL 2703.

Interlock & Hybrid Interlock



The Interlock provides north-south and east-west structural and ground bond connections creating a structurally contiguous hyper-bonded array. Interlock UL listed to UL 2703 and ETL Listed to UL1703.

Ground Zep



The Ground Zep provides a point of connection between the PV array and the equipment grounding conductor. One Ground Zep is required for every 72 PV modules. UL and ETL listed to UL467. UL listed to UL 2703.

Adjustable Mighty Hook, HDG



Splice Kit



Universal Box Bracket



Array Skirt



Wire Clip



Zep Tool & Flat Tool



This document does not create any express warranty by Zep Solar or about its products or services. Zep Solar's sole warranty is contained in the written product warranty for each product. The end-user documentation shipped with Zep Solar's products constitutes the sole specifications referred to in the product warranty. The customer is solely responsible for verifying the suitability of ZepSolar's products for each use. Specifications are subject to change without notice. Copyright © 2010 - 2012 Zep Solar, Inc. U.S. Patent #7,592,537, U.S. Patent 8,109,048, U.S. & Int'l Patents Pending. Last Update: January 15, 2013 2:21 PM

Visit [zepsolar.com](http://zepsolar.com) for more information about our products and company.